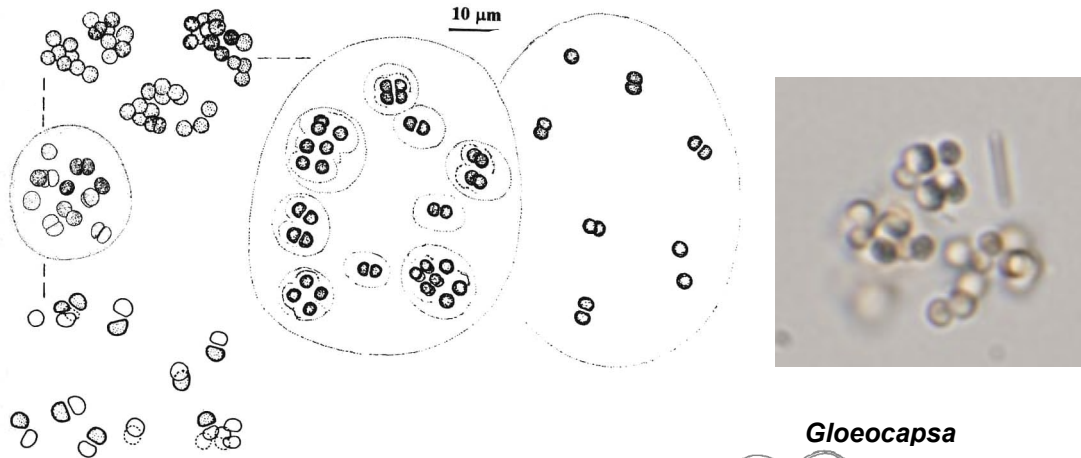


## SOME COMMON FRESHWATER ALGAE IN NORTH CAROLINA

### Cyanobacteria (blue-green algae)

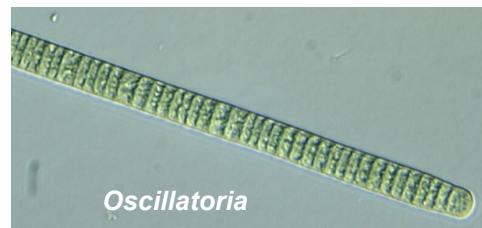
**Chroococcus** [*Chroococcus dispersus*] – solitary or colonial (1-4-16 cells, rarely more); colonies round to irregular in outline with irregularly, sparsely, or more densely arranged cells; cells sometimes in groups within a common mucilage. The mucilage margin may not be distinct.



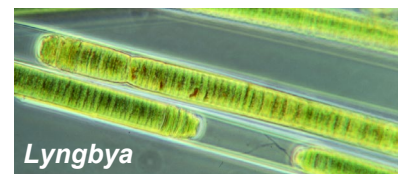
**Gloeocapsa** [pron. glee-oh-cap sa] – covered in the laboratory handout (obvious, layered sheath)



**Oscillatoria** [pron. os-sill-uh-tor-ia] – covered in the laboratory handout [sheath does not extend; no cross-wall constrictions].  
Freshwater plankter

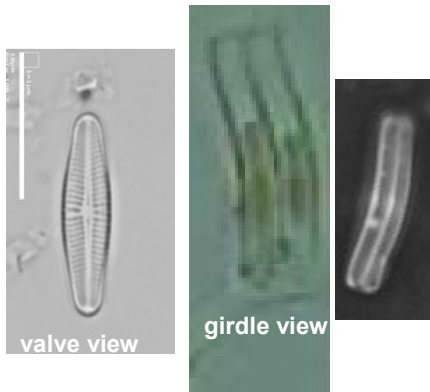


**Lyngbya** [pron. ling-bee-yuh] – sheath extends beyond trichome; no cross-wall constrictions; no specialized cells. Freshwater plankter / benthic

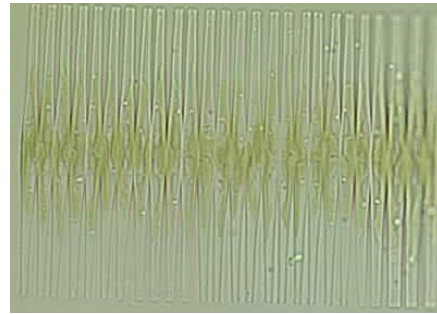


**DIATOMS (other "golden-brown" members)**

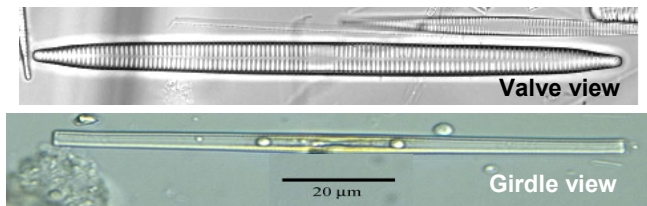
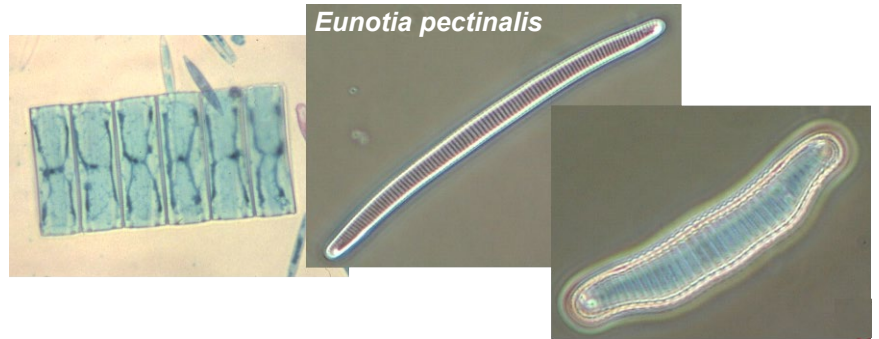
**Achnantheidium** – freshwater benthic  
(pron. ac-nan-thid-ee-um)



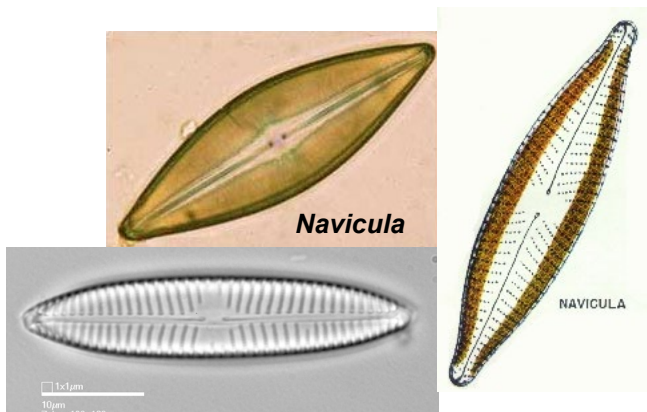
**Fragilaria [Fragilaria crotonensis]**  
(pron. frag ih lair ee uh) – freshwater benthic



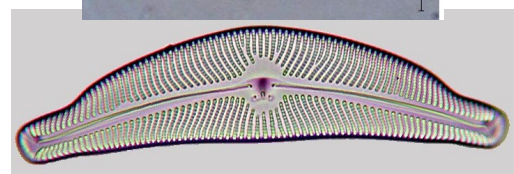
**Eunotia pectinalis**  
(pron. you no shia peck tin al is)  
Freshwater, softwater benthic



**Synedra** (pron. sigh nee dra)

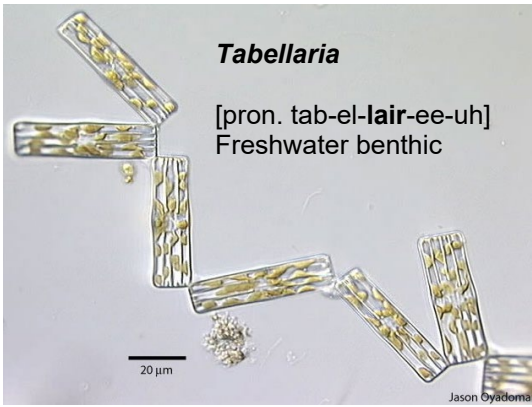


**Navicula** (pron. nav ik you la)

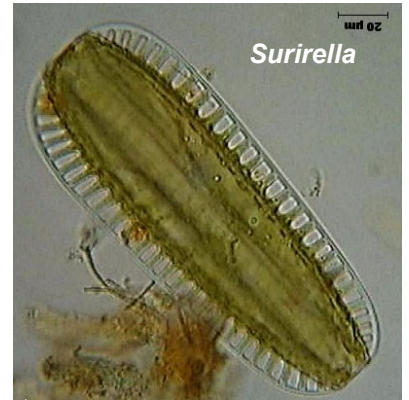
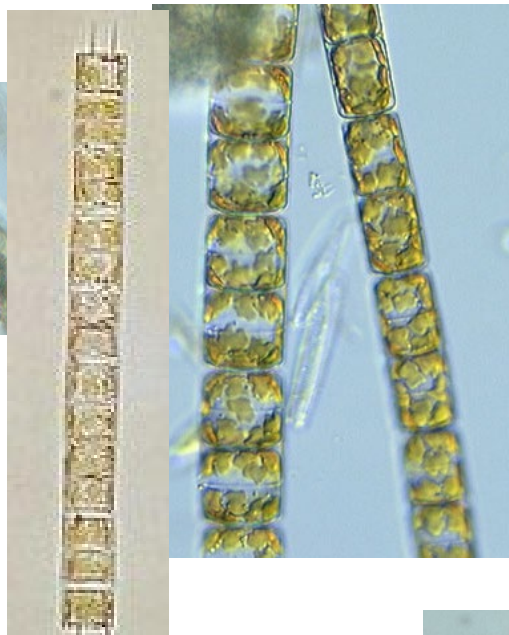


**Cymbella** (pron. sim-bell-uh)

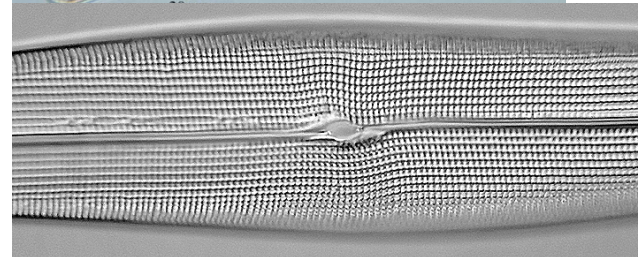
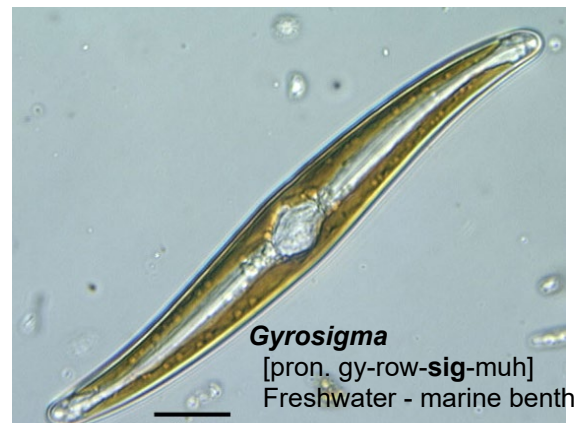
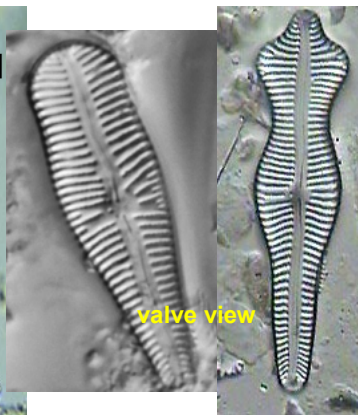
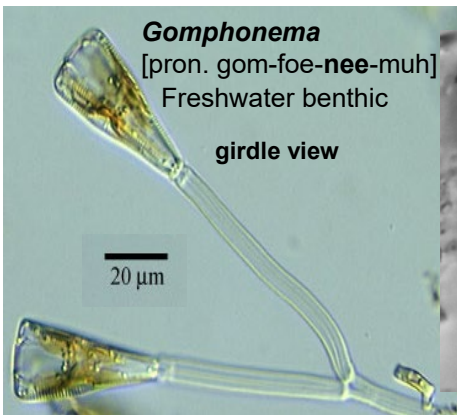




**Aulacosira**  
(pron. all-oo-koh-sigh-ruh)  
Freshwater benthic



(pron. sir-rear-ell-uh)  
Freshwater benthic

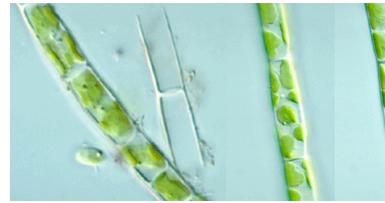


**"Yellow-Green Algae" (Class Xanthophyceae)**

***Tribonema***

[pron. trib-oh-nee-muh]

Thin H-pieced cross walls; often with small discoid chloroplasts that do not fill all of cell.



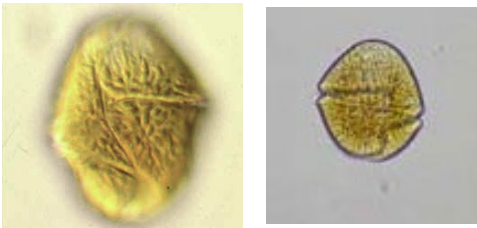
***Tribonema***



**Dinoflagellates (Phylum Dinophyta)**

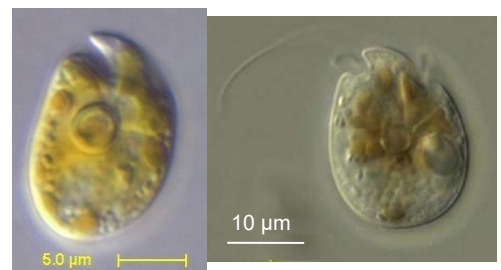
***Gyrodinium instriatum***

(pron. jie-row-din-ee-um)



***Amphidinium***

(pron. am-fi-din-ee-um)

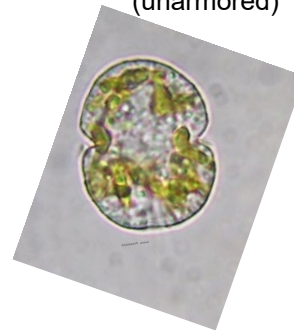


***Ceratium***  
(dinoflagellate)



***Gymnodinium***

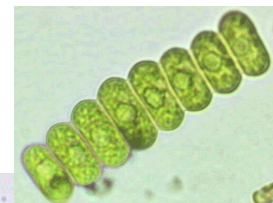
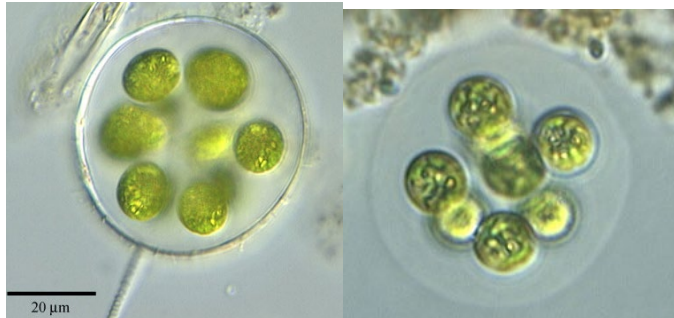
(unarmored)



**Green Algae (Phylum Chlorophyta)**

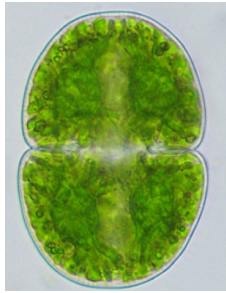
***Gloeocystis***

(pron. glee-oh-SIS-tis)



***Scenedesmus*** (pron. sken-eh-DES-mus)

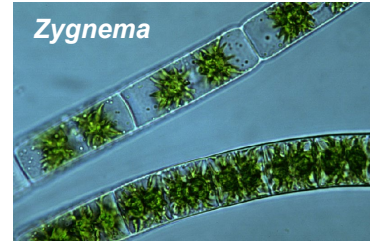




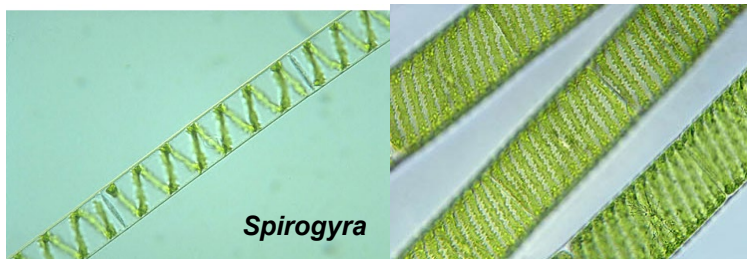
**Cosmarium**



**Closterium**



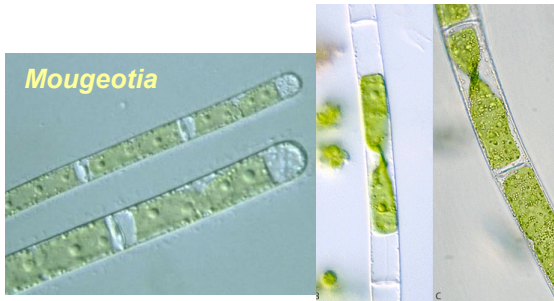
**Zygnema**



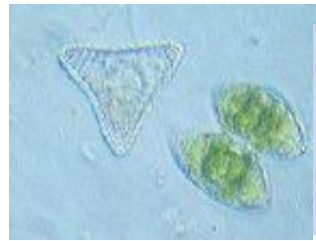
**Spirogyra**



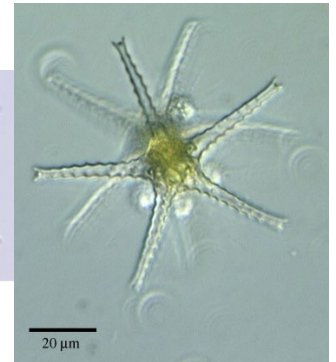
**Klebsormidium**



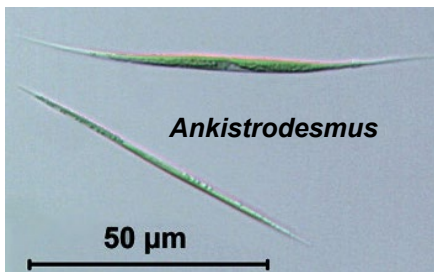
**Mougeotia**



**Staurostrum**



20 µm



**Ankistrodesmus**

50 µm

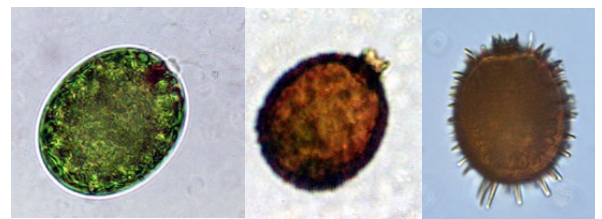
**Euglenoids (Phylum Euglenophyta)**



**Euglena**

(pron. you-**GLEEN**-uh)

**Trachelomonas**



(pron. track-eh-low-**MOAN**-us)